

E2M1.5 TWO STAGE ROTARY PUMP

1.8 m³h⁻¹, 1.1 ft³min⁻¹, 30 l min⁻¹

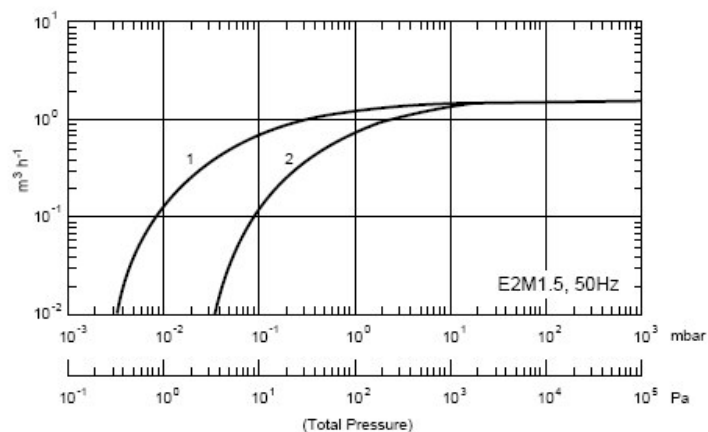


This miniature two stage pump features an alternative inlet connection position at the side of the pump so that overall installation height can be reduced to a minimum when required.

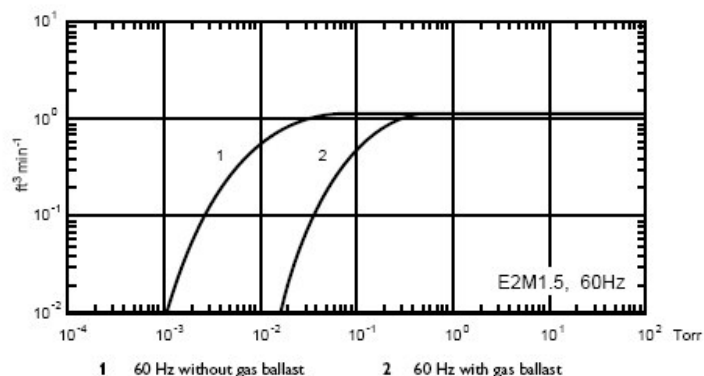
The interstage version features an additional pumping port to provide a rough vacuum for auxiliary duties.

TECHNICAL DATA

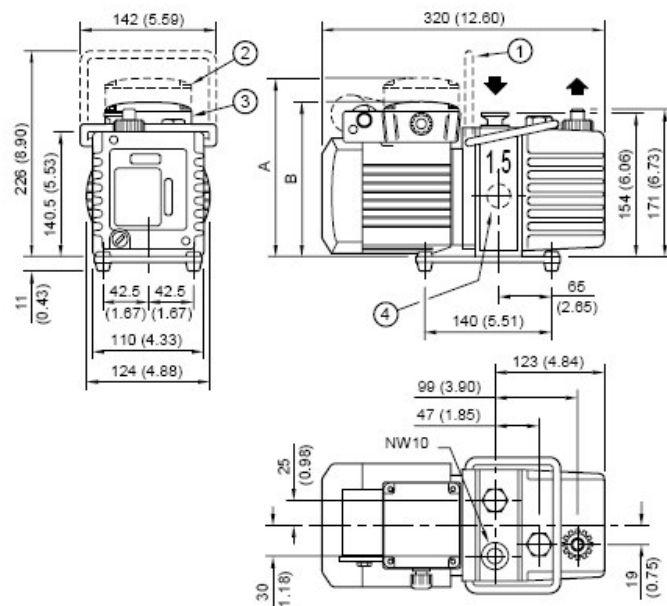
Displacement (swept volume) 50 Hz	1.8 m ³ h ⁻¹ / 1 ft ³ min ⁻¹
Displacement (swept volume) 60 Hz	2.2 m ³ h ⁻¹ / 1.3 ft ³ min ⁻¹
Speed (Pneurop 6602) 50 Hz	1.6 m ³ h ⁻¹ / 0.8 ft ³ min ⁻¹
Speed (Pneurop 6602) 60 Hz	2.0 m ³ h ⁻¹ / 1.2 ft ³ min ⁻¹
Ultimate vacuum (total pressure)	
without gas ballast	3 x 10 ⁻³ mbar / 2.3 x 10 ⁻³ Torr
with gas ballast	2.5 x 10 ⁻² mbar / 1.9 x 10 ⁻² Torr
Inlet connection	NW10 flange
Outlet connection	Nozzle 11 mm external diameter removable from hole tapped 3/8 in BSP
Maximum permitted pressure at outlet	0.5 bar gauge / 7 psig
Maximum inlet pressure for water vapor	15 mbar / 11 Torr
Maximum water vapor pumping rate	16 g h ⁻¹
Motor power 50/60 Hz (IP54)	0.16 kW
Operating temperature range	12 - 40 °C
Weight	10 kg / 22 lbs
Noise	54 dB (A) @ 50 Hz
Oil capacity - maximum	0.28 liter
minimum	0.2 liter
Recommended oil (supplied)	Ultragrade 15



1 50 Hz without gas ballast 2 50 Hz with gas ballast



1 60 Hz without gas ballast 2 60 Hz with gas ballast



1 Handle (can be removed)
2 110 - 120 V motor, A = 189
3 220 - 240 V motor, B = 160
4 Alternative inlet position

ORDERING INFORMATION

PRODUCT DESCRIPTION	ORDERING NUMBER
E2M1.5 pump, 1-ph, standard	
220-240 V, 50/60 Hz	A37122919
100-120 V, 50/60 Hz	A37122902
Supplied with: Ultragrade 15 oil, NW 'O' ring and centering ring, 2 Allen keys, spares seals for oil drain and filler plugs.	
SPARES	ORDERING NUMBER
The clean and overhaul kit contains all of the springs, gaskets, seals and other components required for routine maintenance and whenever the pump is dismantled. Add a blade kit for a full service. Both kits contain instructions and part identification.	
Clean and overhaul kit	A37101131
Blade kit	A37101132
NW10 centering ring and 'O' ring	C10511396
NW10 'O' ring (pack of five)	H02124032
ACCESSORIES	ORDERING NUMBER
EMF3 outlet mist filter	A46220000
3/8 inch BSP to NW25 adaptor	A25908064

For electrical data, including recommended fuse ratings, see page 1-23. For other accessories, see page 1-23 to 1-27. For rotary pump oils, see page 13-43.